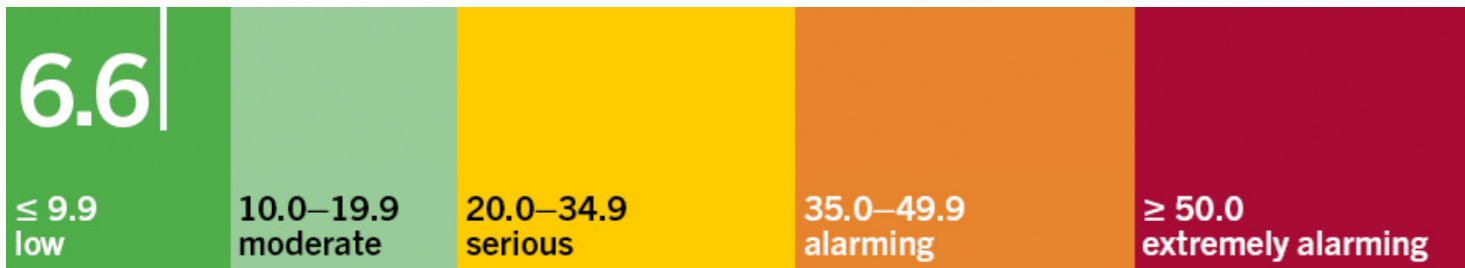


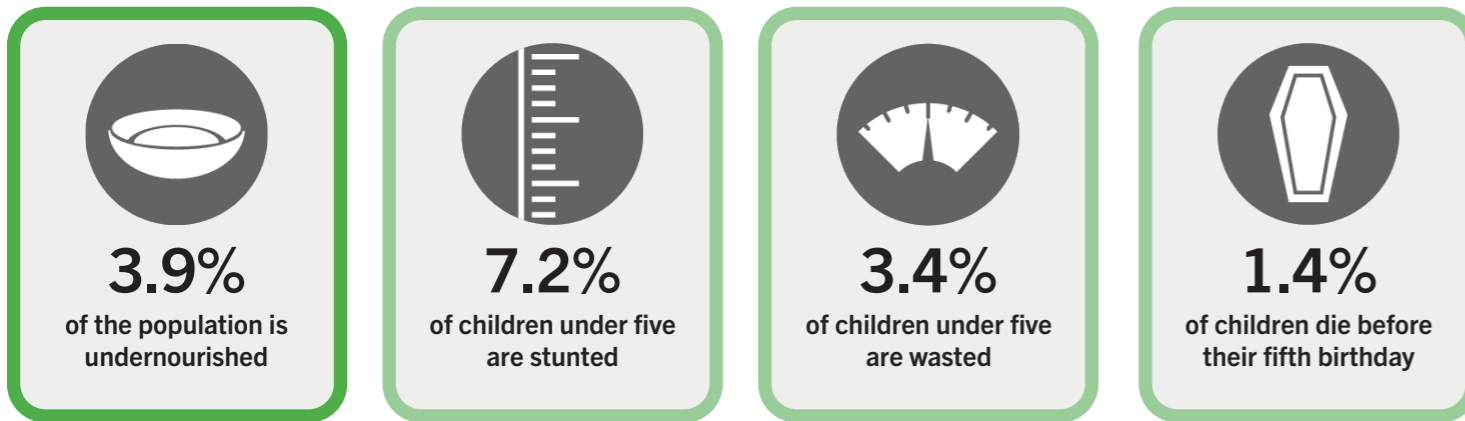
GLOBAL HUNGER INDEX 2024: BRAZIL

GLOBAL HUNGER INDEX 2024: BRAZIL

In the 2024 Global Hunger Index, Brazil ranks **33rd** out of the 127 countries with sufficient data to calculate 2024 GHI scores. With a score of **6.6**, Brazil has a level of hunger that is **low**.



Brazil's GHI Score is based on the values of four component indicators:



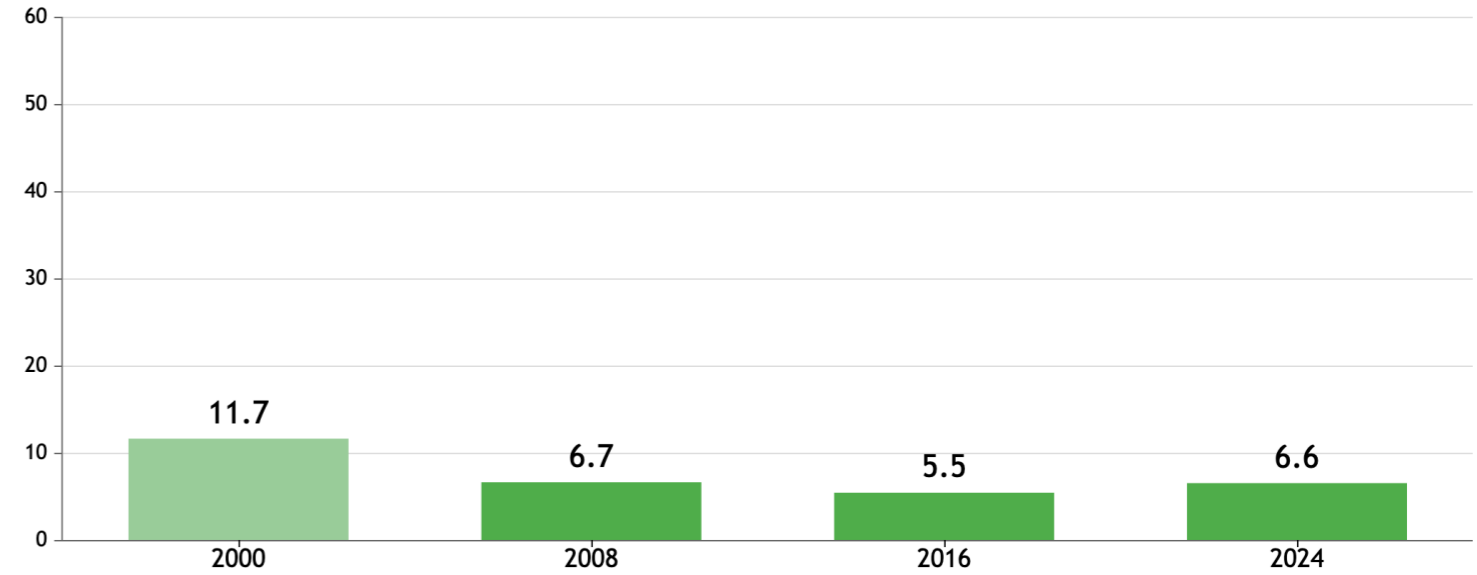
very high high medium low very low

NOTE: — = Data are not available or not presented. See [Table A.3](#) for provisional designations of the severity of hunger for some countries with incomplete data. *GHI estimates.



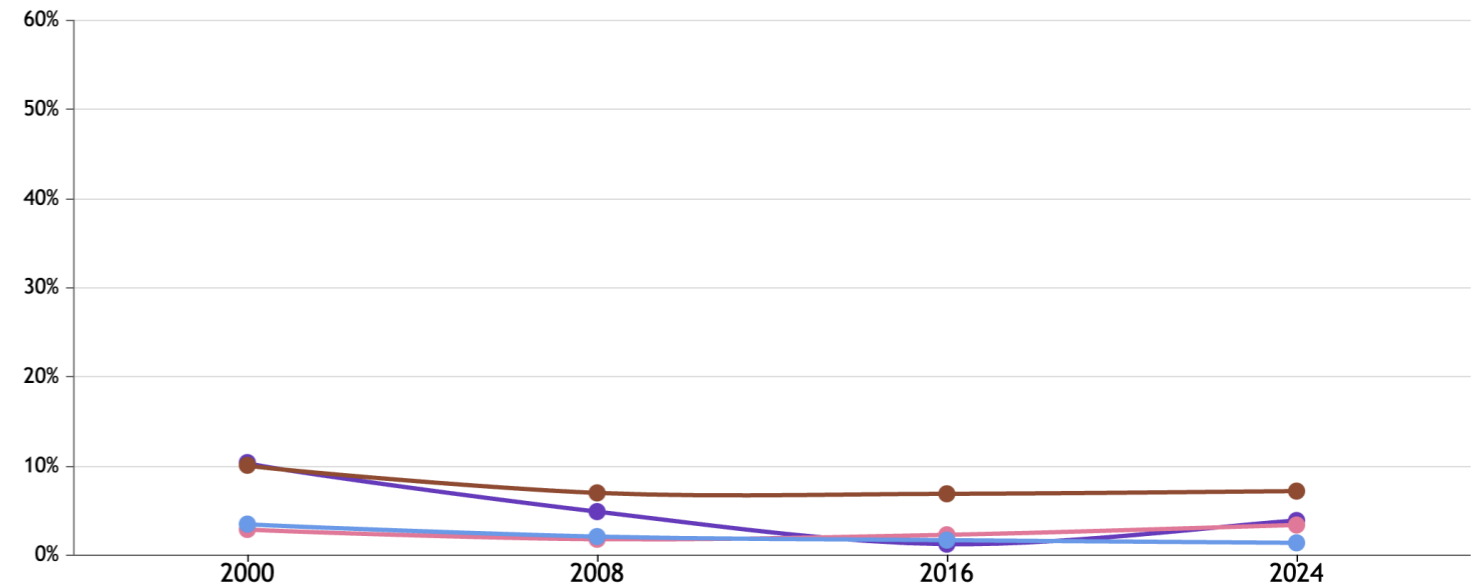
NOTE: See [Methodology](#) for the formula for calculating GHI scores and the sources from which the data are compiled.

GHI Score Trend for Brazil



NOTE: Data for GHI scores are from 1998–2002 (2000), 2006–2010 (2008), 2014–2018 (2016), and 2019–2023 (2024).

Trend for Indicator Values - Brazil



Undernourishment (% of population) Child wasting (% of children under five years old)
Child stunting (% of children under five years old) Child mortality (% of children under five years old)

NOTE: Data for child stunting and child wasting are from 1998–2002 (2000), 2006–2010 (2008), 2014–2018 (2016), and 2019–2023 (2024). Data for undernourishment are from 2000–2002 (2000), 2007–2009 (2008), 2015–2017 (2016), and 2021–2023 (2024). Data for child mortality are from 2000, 2008, 2016, and 2022 (2024).

The Global Hunger Index is a peer-reviewed annual report, jointly published by Concern Worldwide and Welthungerhilfe, designed to comprehensively measure and track hunger at the global, regional, and country levels. This country profile is based on data and information from the 2024 Global Hunger Index. The boundaries and names shown and the designations used on maps on this page do not imply official endorsement or acceptance by Welthungerhilfe (WHH) or Concern Worldwide.

For more information please see the 2024 Global Hunger Index at www.globalhungerindex.org

Publication date: October 2024

