

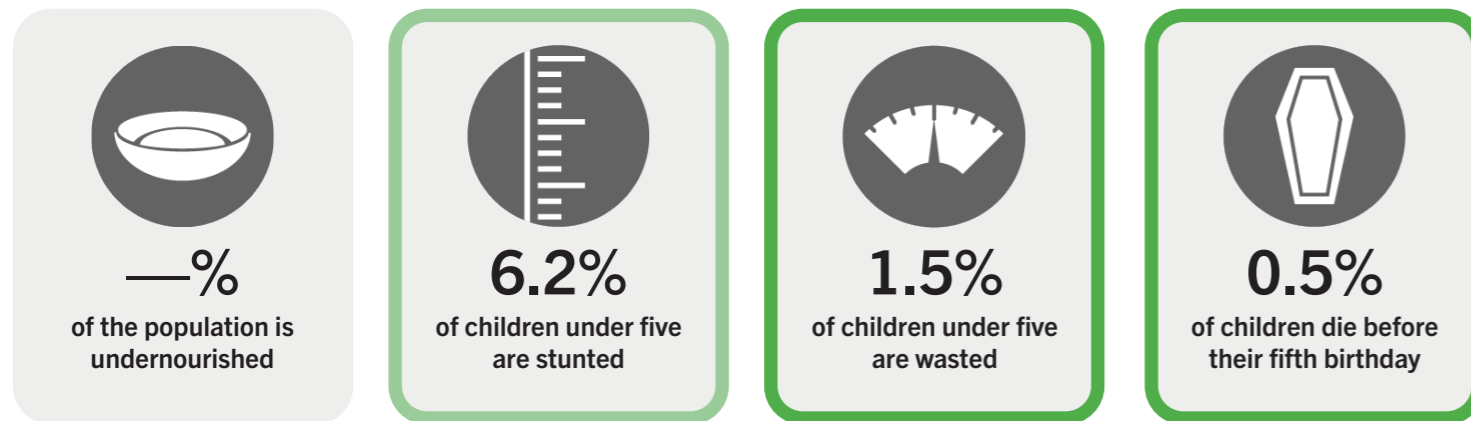
GLOBAL HUNGER INDEX 2024: QATAR

GLOBAL HUNGER INDEX 2024: QATAR

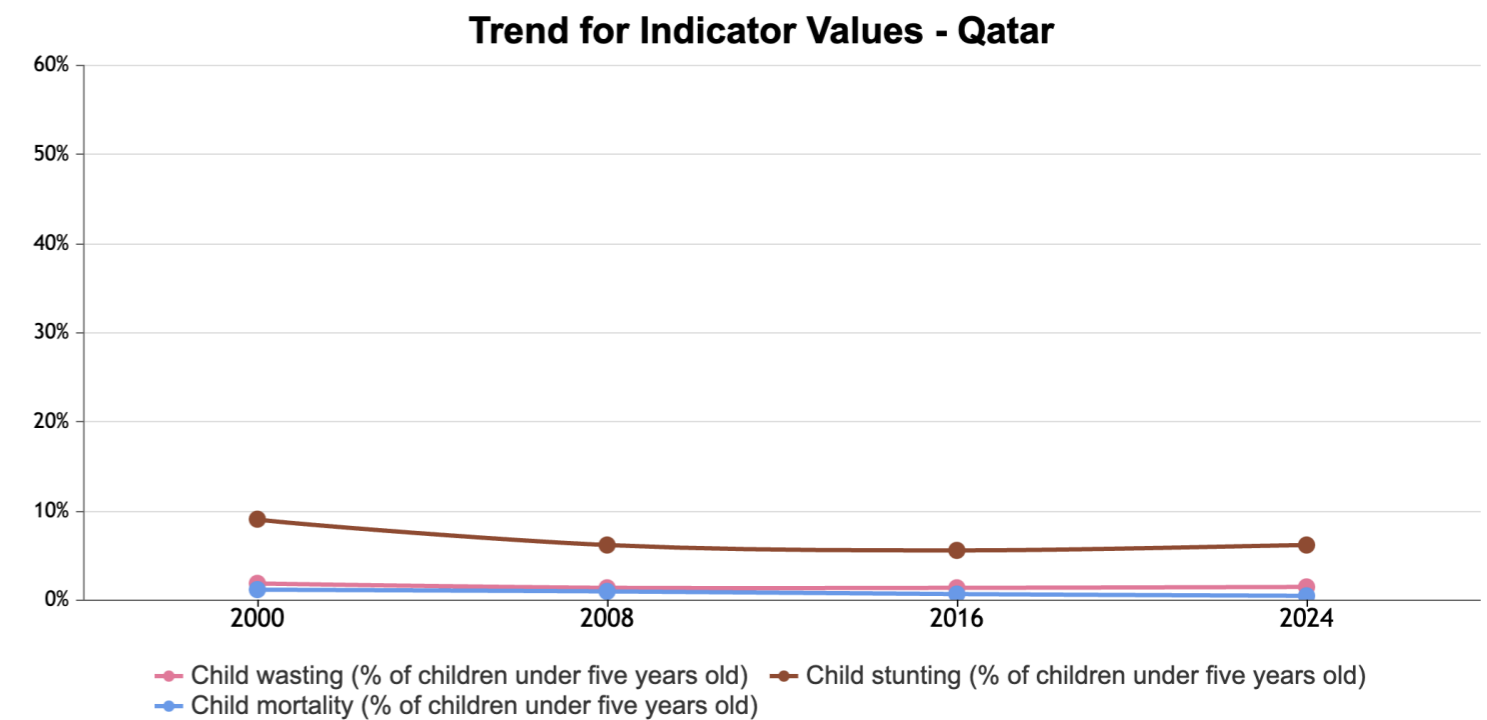
Qatar could not be included in the 2024 Global Hunger Index because of lack of data.



Qatar could not be included in the 2024 Global Hunger Index because of a lack of data. However, some GHI component indicator values are available:

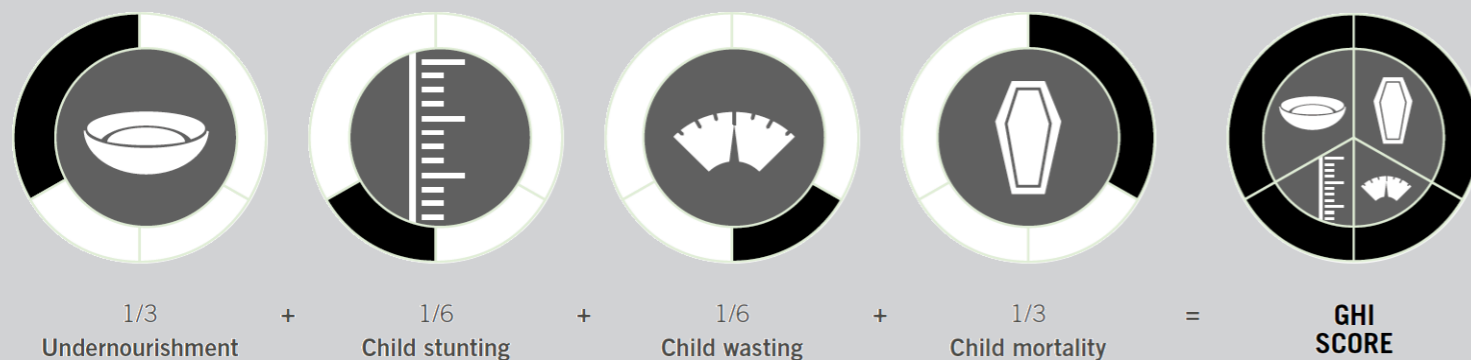


■ very high ■ high ■ medium ■ low ■ very low



NOTE: — = Data are not available or not presented. See [Table A.3](#) for provisional designations of the severity of hunger for some countries with incomplete data. *GHI estimates.

NOTE: Data for child stunting and child wasting are from 1998–2002 (2000), 2006–2010 (2008), 2014–2018 (2016), and 2019–2023 (2024). Data for undernourishment are from 2000–2002 (2000), 2007–2009 (2008), 2015–2017 (2016), and 2021–2023 (2024). Data for child mortality are from 2000, 2008, 2016, and 2022 (2024).



NOTE: See [Methodology](#) for the formula for calculating GHI scores and the sources from which the data are compiled.

The Global Hunger Index is a peer-reviewed annual report, jointly published by Concern Worldwide and Welthungerhilfe, designed to comprehensively measure and track hunger at the global, regional, and country levels. This country profile is based on data and information from the 2024 Global Hunger Index. The boundaries and names shown and the designations used on maps on this page do not imply official endorsement or acceptance by Welthungerhilfe (WHH) or Concern Worldwide.

For more information please see the 2024 Global Hunger Index at www.globalhungerindex.org

Publication date: October 2024

